

The CWF VITAmix

WHERE REFUND\$ MEET REALITY!



VOLUNTEER NEWS AND UPDATES



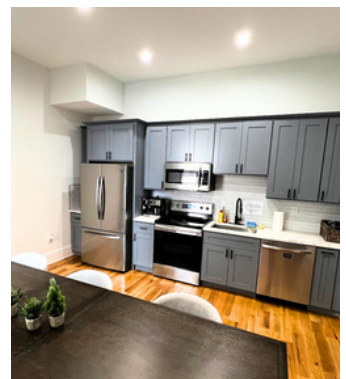
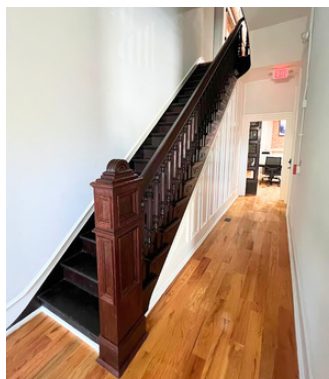
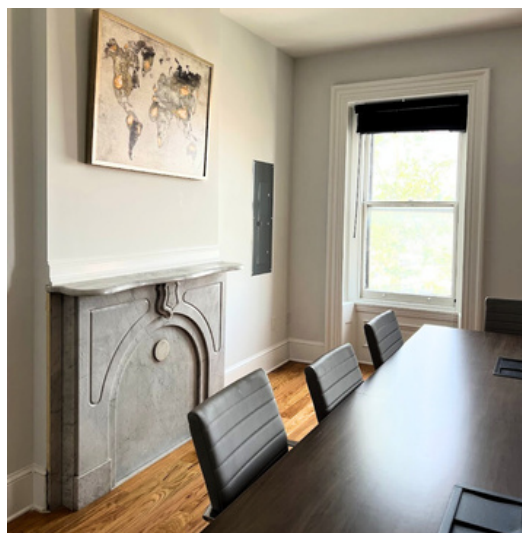
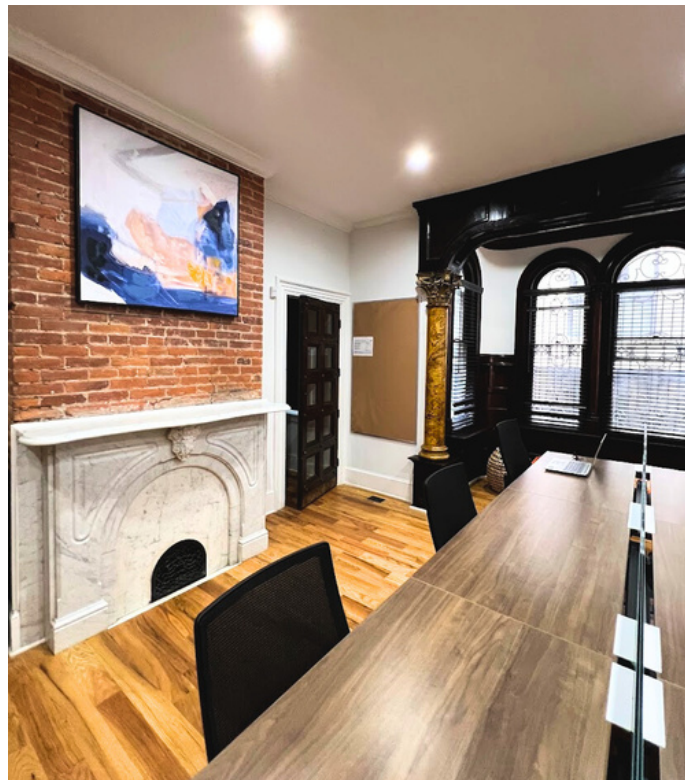
FEDERAL REFUND COUNTER

2 2 4 9 5

We're deep into summer now, but the returns are still coming in. **We are now up to 22,495 federal returns!** Want to help out? Virtual volunteer shifts are available Monday-Thursday every week! [Click here to sign up,](#)

NEW CWF HQ!

We are all settled in at our new headquarters at **935 N. 29th Street** and we can't wait to welcome you all into our new home! Until then, check out some photos of the space.



2023 PRISON PROJECT

CWF staff have been spending time this summer at Philadelphia prisons helping the currently incarcerated receive their 2020/2021 stimulus checks. So far this year, we have been able to file nearly **200 stimulus returns** for a total of over **\$300,000 in refunds!** Hear what **Monica Pierson**, Tax Operations Area Manager, has to say about the experience:

“

It's a great opportunity to be able to provide this service to the inmates. We are increasing their odds of living productive lives after their release, benefitting the community as a whole. Refund checks are used to get basic necessities in the facilities as well as provide financial support for loved ones at home. The inmates are incredibly appreciative of the work CWF is doing and feel a great sense of relief knowing that those in the community care about them.

”

Want to get involved? Email Monica at mpierson@cwfphilly.org.

STAFF SPOTLIGHT

Get to know the CWF staff! Each month in the off-season we will shine a light on a different member of our amazing team, with faces both old and new!

ELIZABETH OLSON

Volunteer Engagement & Partnership Manager

When did you start working at CWF?

"I started at CWF in October 2021 as the part-time Volunteer Coordinator. In March 2022, I was made full-time and just last month I was promoted to my current position."

What exactly does the Volunteer Manager do?

"I work alongside our Director of Volunteers to recruit, train, coordinate, and support our wonderful volunteers. I also manage our internship program as well as a number of partnerships with local colleges/universities."

What did you do prior to coming to CWF?

"Directly prior to this I was actually working full-time as a nanny! But my volunteer management experience comes from my time as an undergrad at Temple University leading various community-based campaigns. I also spent many years as a barista, so ask me about coffee!"



What is your favorite thing about working here?

"I love how diverse our volunteer family is. Everyone from high schoolers to retirees, those with years of tax experience and those eager to learn - it's really inspiring seeing all these different people working together to forward our mission and help the community."